

# The Performance Space

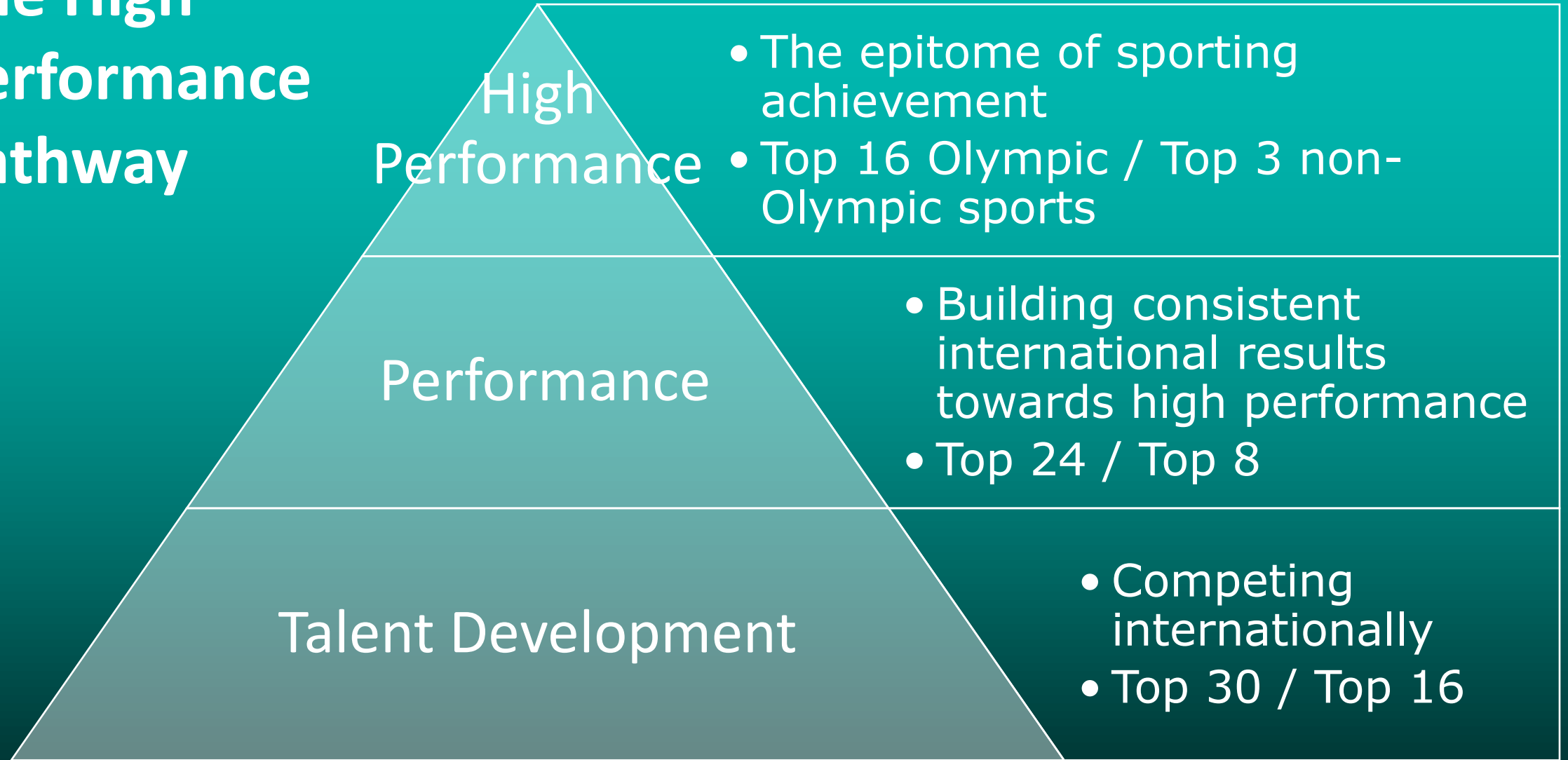
Qualification, nomination and selection to NZ Tours





1. The High Performance Pathway (HPP)
2. Events
3. Qualification
4. Nomination and Selection
5. Gymnastics NZ Selectors

# The High Performance Pathway



Emerging Talent

# Events: Pinnacle and Performance



1. Qualification

2. Nomination

3. Selection



# Qualification

1

Athletes and officials complete ITT; and

2

Qualification criteria: Eligibility must be met; and

3

Qualification criteria: Performance criteria must be met; and

4

Qualification criteria: Over-riding objective must be satisfied.

5

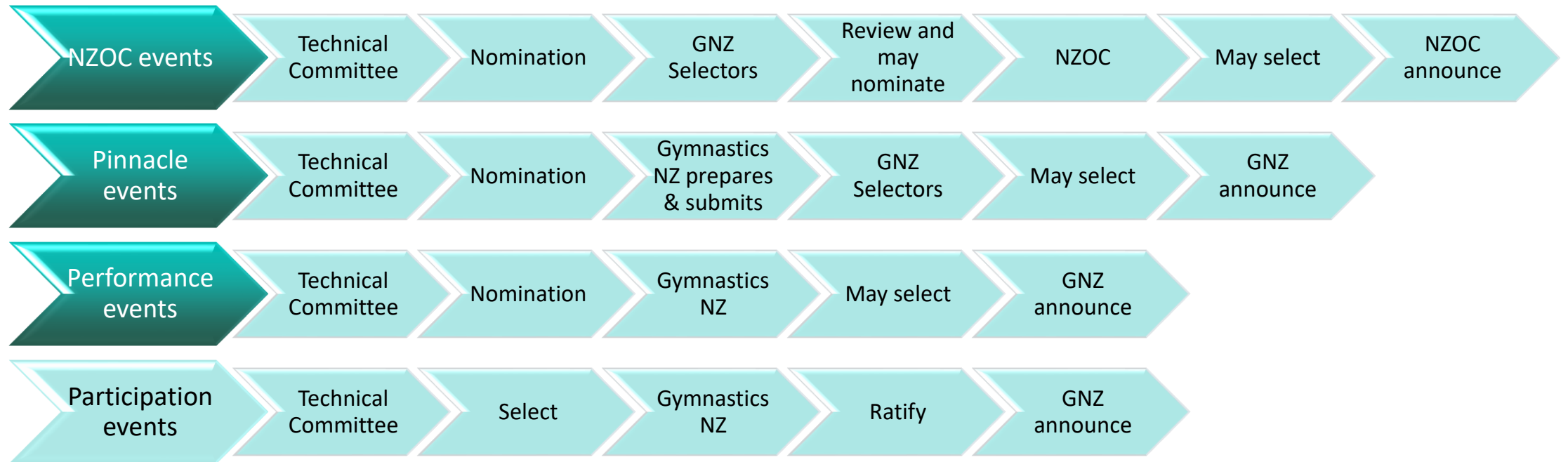
Qualified athletes are eligible for nomination and consideration for selection.

# Qualification does not mean automatic selection.

Qualification means that an athlete is ELIGIBLE FOR NOMINATION and  
CONSIDERATION FOR SELECTION.



# Nomination and Selection





# Our Selectors

## Dr Denis Mowbray

- Convenor of Selectors
- Director of the Oceania Gymnastics Union
- FIG Council Member (Oceania)

## Carmel Leslie

- Previous International WAG athlete and 1990 Commonwealth Games Representative
- Programme Manager (Otago Academy of Sport)

## Angela Walker Subramaniam

- GNZ Board Member
- Previous International RG athlete & 1990 Commonwealth Games multi-medallist

## Rebecca Hooper

- Senior Legal Counsel (Regulations & Compliance)

# More Information

Please contact the GNZ Technical Committee  
Performance Advisor or the GNZ Performance Advisor  
[gnzoffice@gymnasticsnz.com](mailto:gnzoffice@gymnasticsnz.com)

